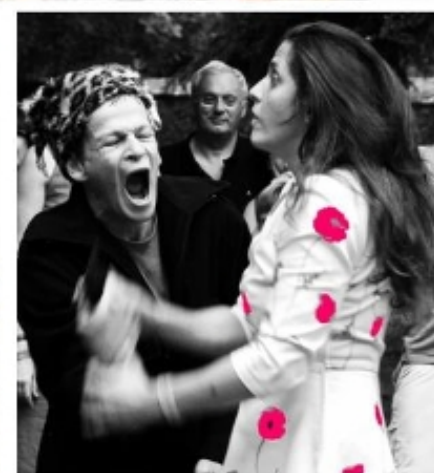




Photo: Anna Popenock



photo: Anthony Raphael



LA CIE DES SIX FAUX NEZ

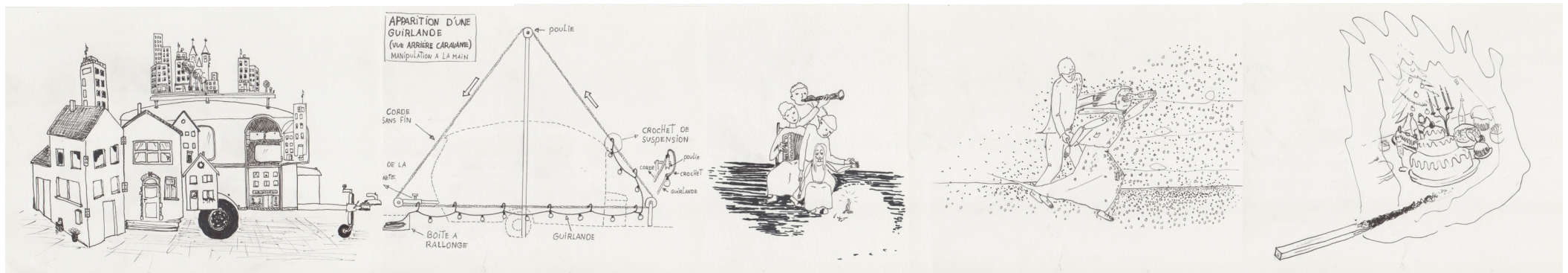
A marionette with bright orange, spiky hair and a green, tattered dress is the central figure. It holds a matchbox with the word 'FIAMMIFERO' and a flame logo. The marionette is being manipulated by a person whose hands are visible. The background is a dark, industrial space with a large, cracked floor covered in blue and white debris. A large, multi-paned door is visible on the right. The overall lighting is dramatic, with strong highlights and deep shadows.

PRÉSENTE
FIAMMIFERO

CRÉATION MAI 2021

Free adaptation of the fairytale « The little girl and the matches » of Hans C. Andersen. Its the story of a poor little girl that tries to sell matches in the street during Christmas night. She encounters a violent world, not willing to share. She doesn't sell anything and she's so cold that she ends up using her last matches. Which visions will appear this time in the flames ?....

Starting from this story, nourished with metaphors, the show questions our modes of consumption. It confronts the real world with that of the playful childhood. Here, the light world rubs the shoulders with a sad harshness.



Their universe has a strong design almost filmic (between Chaplin, Raoul Servais, Karel Zeeman,...) - The scenery (pop-up) made of metal, cardboard, pulleys, ropes... are only mechanical and manipulated to view, such as in the old theatres of yesteryear. So the show appears as a real little music box, it is believed to see in a dream - Although, looking closer...

From the musical point of view it's an eclectic journey that brings us from Moondog to Brahms, passing some jazzy and french folksounds. It's played live (accordéon, Bass-clarinet, melodika, singing and percussions).

Style/artistic discipline : musical streetperformance without text for a pop-up caravan, 3 actors/musicians and a marionet.

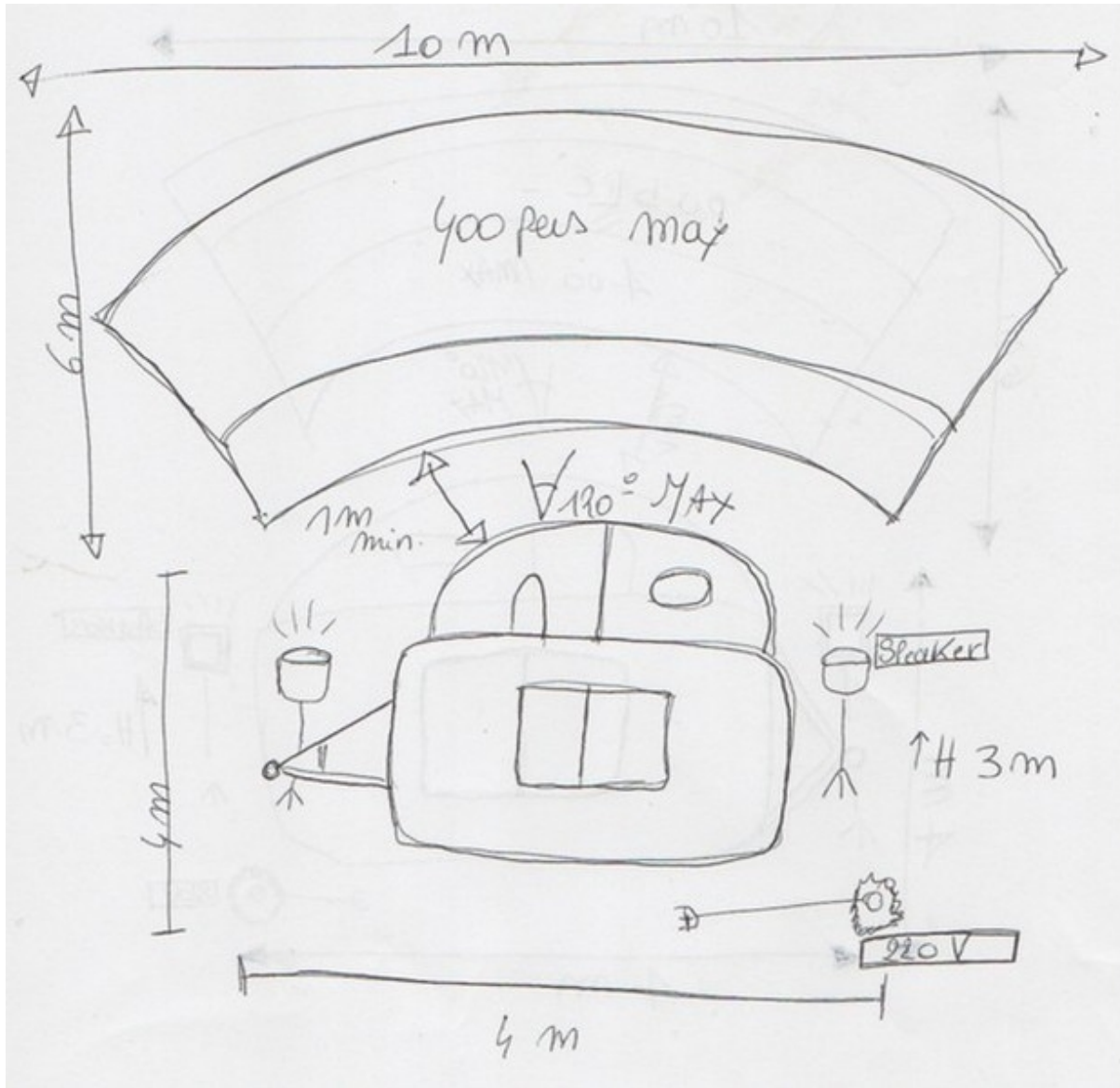
Duration : 40 minutes.

Target audience : family /from 8 years old



Crédits photos : Jean-Marc Shneider et Dimitri Vandamme

TECHNICAL RIDERS



Scene space (stage) : 4m/4m /3m (high).

Caravan closed: 2m/3m/2m (high).

Public space : begins at minimum 1m from the border of our scène/ angle of the the amphitheatre 120°max

Number : 300 persons maximum.

Conditions of the floor : flat and hard - (accessible with van) it must be possible to put the caravan with the van on the spot where we will perform - Its only possible to move the caravan manual on a short distance

Electricity needs : one arrival (source) of 220V in the back of the stage.

Lightnig : please contact us at forhand if the performance takes place during the evening or the night

Sound : the performance will be amplified / Cie Les Six Faux Nez brings their own tecnical equipment -

!the place where we play has to be a calme place, no disturbing sounds around-

Time of building the set : 2h

The performance can be played 2 times per day - minimum time between 2 performances : 1h30 .

Time of deconstructing : 1h30

Stay : 3 artists + 1 technician - loge for 3 persons - drinks on the spot according the working time at the space - meal : 1vegan +1 vegetarien +2 omnivores- /staying overnight : 1 couple + 2 singles

TARIFS 2021/2022

Représentation

1 day/ 1 représentation : 1400 € -

2 days / 1 représentation by day : 2500 € -

Additionnals days : + 1100 € (1 représentation)

The show can be played twice a day , each additionnal representation = 200 € ((by day)

Travel expences :

In Belgium , included in the price.

Out of Belgium, 1 camionnette+1 caravane - 0,37 /km (from 5560 Mesnil-église).

CREDITS :

Playing: Barbara Moreau, Benoit Creteur, Vincent Verbeeck.

Director: Micheline Vandepoel.

Concept/writing/dramaturgy: collectif

Music Direction: Vincent Verbeeck.

Concept and realisation of the set : Benoit Creteur.

Concept and realisation of the marionet : Barbara Moreau.

Concept and realisation of the props: collectif

Technic and Sound: Sébastien André .

Conseil sonorisation : Louison Acié.

PARTENAIRES

With the help of

The Federation Wallonia Brussels, section arts of circus and streetperformance.

Section culture an education.

Region Wallonnia – help for employment .

In coproduction with

festival Namur en mai and l'Allumette (Houyet).

Hosts of stay in residence

L'allumette, le CAR (Ath), culturel centre Wolubilis (Brussels).



CONTACTS

La cie des Six Faux Nez
4A RUE Haute 5560 Mesnil Église -Belgique
0032495104133

diffusionsixfauxnez@gmail.com
www.sixfauxnez.net

Chargée diffusion/production : Barbara Moreau