

The Cie des Six Faux Nez présente

Transit Cabaret

Promotional dossier

Coverage Festi.tv (Festival OFF Avignon 2016) :

<https://youtu.be/HV5O5h2fKSY>



Contact and promotion

diffusionsixfauxnez@gmail.com

+32(0)495 10 41 33

Transit Cabaret

Bye the Cie des Six Faux Nez

An intelligent mix of physical and musical theatre with a subtle touch of dance. A play like a silent movie. The story isn't told, it reveals itself on stage. A stage stirred by poetry, inhabited by irresistible, gentle and off-the-wall characters. It's poetic theatre-cabaret, very underground.

Cast :

Designer Benoit Creteur

With Cristel Van der stappen, Barbara Moreau, Réginald Spitsaert, Bernhard Zils et Benoit Creteur

Director Micheline Vandepoel et Louis Spania

Musical ear Vincent Verbeek.

Small magic director Gaël Bernier

Set designer Benoît Creteur

Puppet designer Barbara Moreau

Costume designer Bernardine Delplace

Light designer and board operator Sébastien André



Duration: 65 min

Form: in theatres, marquees or outside venues at nighttime / Visual and musical theatre / End on

Disciplines : Physical theatre/ Burlesque /Live music /Puppetry/ Small magic.

With support off : la Fédération Wallonie-Bruxelles, Service du Cirque, des Arts forains et des Arts de la Rue, de la Roseraie, du Centre Culturel de Beauraing, de Latitude 50, du Centre Culturel du Brabant Wallon, du Bamp, du WBI et du WBTD.

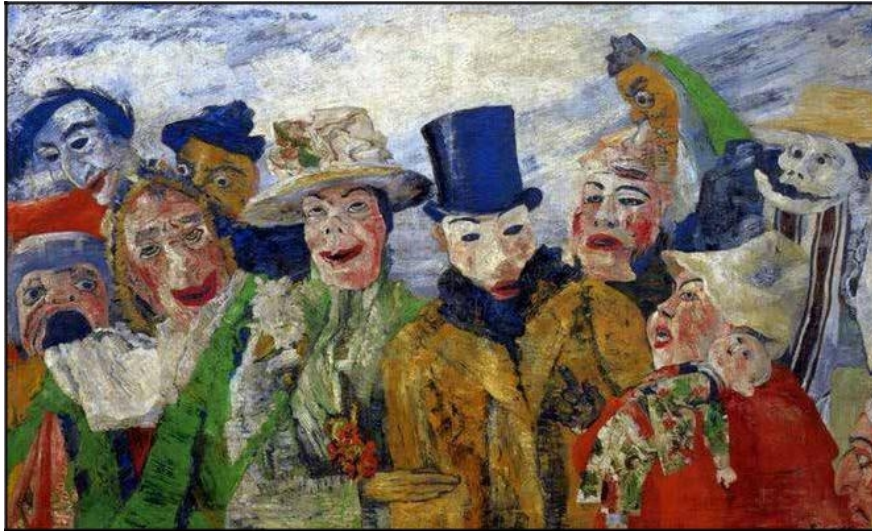
The company plays with it's magical wand to show us again the power that theatrical madness can have. Here, the universe is majestic and festive, sublime and marked by a beautiful humanity. A whirlwind from which we leave capsized but with the certainty that our heart is back in the right spot.. **(The Herald, Scotland)**

It's a play from another dimension. The journey is gentle, captivating, funny...even death is beautiful. **(Avignon-off.com)**



The costumes and the design of this comedy is clearly linked to the tradition of english pantomime. It is a popular and musical character comedy, which takes us on an extravagant and humorous journey. A moment of pure delight. **(Avignon Festi.tv)**

This physical and poetic theatre, which lets us rediscover simple but terribly efficient gags, is followed by sometimes dark and sometimes festive songs. These five clowns give us a work of real craftsmanship and know how to take the audience on an overwhelming journey. **(La Provence, France)**



The influences

Five characters seemingly jumped out of a James Ensor painting. They've come to play...something. It's like coming to life, without really knowing. So they improvise, with their bodies, their play, the music, humor, until finally everything comes together... unchained. That is how a seeming contradiction of the human condition is revealed : we are fighting for our own survival in our own story, forgetting, naive as we are, that we are strung together on the same boat...

As for script and acting, we have directly been influenced by scenes from silent movies and particularly it's pantomime, a specific kind of humor and the clichés brought forward by this genre of cinema

These clichés are used as the starting point and subsequently they evolve into something far more subtle, as the story unfolds.

The show is organized like a cabaret. The individual scenes follow each other and each one could be an act of it's own (small magic, dance, song, ...) but they work together, to tell the « bigger story » underlying the show.



The music

A mix of blues, pop, folk-rock and Kletzmer.



The band consists of two accordions, one trumpet, one clarinet, percussions and voices. We also use a loopstation, very high-tech, to create live sound-atmospheres.

Set Design

The show presents itself like a cabaret, the audience is end on, either in rows of seats or like in a cabaret seated around tables facing the stage. The show has been created to be performed in theatres or marquees. Upstage there is a small, raised platform, with the flair of an open-air café, for the musicians. A table on wheels is used...as a table but also for different purposes (a door, a bed, ...) . A simple and ingenious set-design with a tendency to the burlesque and to create a certain stage dynamic. It's main purpose is to be in service of the play.



The Cie des Six Faux Nez

An international ensemble born in 1994 under the impuls of emerging belgian artists who graduated from Physical theatre schools.

We like to define us as „ craftsmen of an all-terrain creative theatre, funny, intense and poetic „ .

All-terrain in the sense of being curious of everything and being able to involve ourselves everywhere. **Poetic** in the sense of „ that wich gives breath „ . **Intense**, because we tend to go tot he heart of things. And **funny**, because we believe that humor ist he best part of humanity.

Shows in the closet :

L'Odyssée des valises (1996), La fabuleuse épopée de Gilgamesh (1998), Vent d'histoires (2001), Tango des petits poissons (2004), Cadavre Exquis (2008), Le Muet (2008), L'Arnaque (2011).

Shows on tour :

La Caravane (2009), Chimérarium (2014), Transit Cabaret (2014), (H)arm(e) (2018).

Shows to come :

Guernica (temporary title)

www.sixfauxnez.net



The show is End On. Be it in a theatre, on the outside at nighttime or in a marquee.

Minimum on-stage dimensions :

5 m deep / 6 m large / 4 m high

Stage, portable bleacher and palc (a simple, lightweight construction to enclose the venue) supplied by the Cie) :

10m x 10m minimum / hight : 4m

Stage floor : a non-slippery flooring or a dance-mat minimum 5m x 6m (provided by the venue or by the Cie) A smooth, featurless floor, flat and hard.

Lighting :

Minimal power = 13800 W more specifics in the appendix

Maximum power= 20275 W

Imperative :

Theatres or marquees have to be occulted (ie obscured), if the show is to be performed outside it has to be after sunset. No audio disturbances in proximity of the venue.

Sound : Amplification is necessary. If needed, we can take our own equipment.

Maximum house : no limits.

Capacity of our portable bleachers : 180 people.

Set-up time : 2 h in an equipped venue, 4 h with our portable bleachers

Rigging time : 2h in an equipped venue, 2 h 30 min with our own equipment.

Brake-down time : 2 h in an equipped venue, 3 h with our own equipment.

Preparation time between end of set-up and beginning oft he show : 2 h

Duration oft he show : +- 1h 10min

Crew : 5 actors, 1 lighting director

Technical information :

Benoît Creteur : +32(0)495/10.41.33 / creteurb@gmail.com

Sébastien André : +32(0)497/42.19.82 / visidfabud@gmail.com



Promotion (France) :

Temal Production

contact@temalproductions.com

+33 (0)1 41 58 51 51

www.temalproductions.com

Coordination and promotion (Belgique) :

Barbara Moreau

La Cie des Six Faux Nez

4a Rue Haute

5560 Mesnil Église- Belgique

+32(0)82/61.54.32

+32(0)495/10.41.33

ciesixfauxnez@gmail.com

diffusionsixfauxnez@gmail.com

www.sixfauxnez.net

